

25W Single Output Switching Power Supply



GS-25...

Feature

- High efficiency, high reliability
- Universal AC input / Full range
- 100% full load burn-in test
- Protection:
Short circuit / Over load / Over voltage
- Fixed switching frequency at 37 KHz
- Cooling by free air convection
- 2 years warranty
- Dimensions: 99*97*36mm(L*W*H)

Notes:

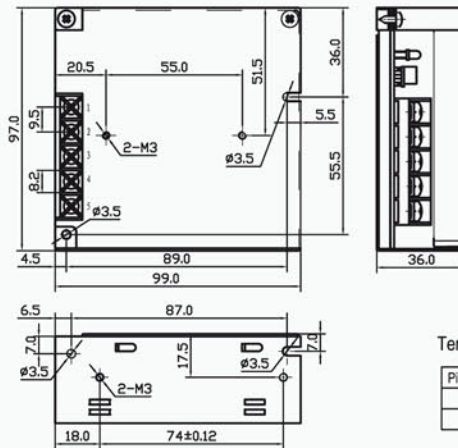
- All parameters NOT specially mentioned are measured at 230VAC input, rated load and 25°C of ambient temperature.
- Ripple & noise are measured at 20MHz of bandwidth by using a 12" twisted pair-wire terminated with a 0.1μ & 47μf parallel capacitor.

- Each output can within current range. But total output power can't exceed rated load

- The power supply is considered a component which will be installed into a final equipment. The final equipment must be re-confirmed that it still meets EMC directives.

Model	GS-25-5	GS-25-12	GS-25-15	GS-25-24	
Output	DC Voltage	5V	12V	15V	24V
	Voltage Tolerance	±2%	±1%	±1%	±1%
	Rated Current	5A	2.1A	1.7A	1.1A
	Current Range	0-5A	0-2.1A	0-1.7A	0-1.1A
	Rated Power	25W	25.2W	25.5W	26.4W
	Ripple & Noise	50mVp-p	100mVp-p	100 mVp-p	100mVp-p
	DC Voltage adi.Range	-5%, +10%	±10%	±10%	±10%
	Setup,Rise,Hold Time	800ms,50ms,10ms/115VAC 300ms,50ms,80ms/230VAC at full load			
Input	Voltage Range	85-264 VAC 47-63 Hz, 120-370VDC			
	AC Current	0.6 A/115 V0.35A/ 230 V			
	Efficiency	72%/115VAC	76%/115VAC	77%/115VAC	80%/115VAC
	Inrush Current	Cold start 15A/115V 30A/230V			
	Leakage Current	<0.75 mA/240VAC			
Protection	Over Load	110%~160% Protection type: Fold back current limiting, recovers automatically after fault condition is removed			
	Over Voltage	115%~135% Protection type: hiccup mode, recovers automatically after fault condition is removed			
Environment	Working Temp., Humidity	-10°C~+60°C; 20%~90 %RH			
	Storage Temp., Humidity	-20°C~+85°C; 10%~95 %RH			
	Vibration	10~500Hz, 2G 10min./1cycle, period for 60min, X, Y, Z each along axes			
Safety	Withstand Voltage	I/P-O/P: 3KVAC I/P-FG: 1.5KVACO/P-FG: 0.5KVAC			
	Isolation Resistance	I/P-O/P, I/P-FG, O/P-FG:100M /500VDC			
Standards	Safety Standard	Design refer to UL1012, TUVEN60950			
	EMC Standard	Design refer to EN55022, EN61000-3-2, -3, EN61000-4-2,3,4,5, ENV50204, EN55024			
Others	Weight	0.39Kg			
	Packing	45pcs/18Kg/0.86CUFT			

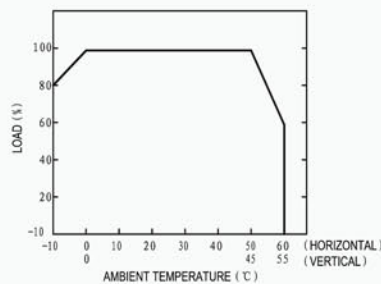
Outline and dimension



Terminal Pin No. Assignment:

Pin No.	Assignment	Pin No.	Assignment
1	DC OUTPUT -Y	3	FG ↓
2	DC OUTPUT +Y	4, 5	AC INPUT

Derating Curve



Static Characteristics(24V)

